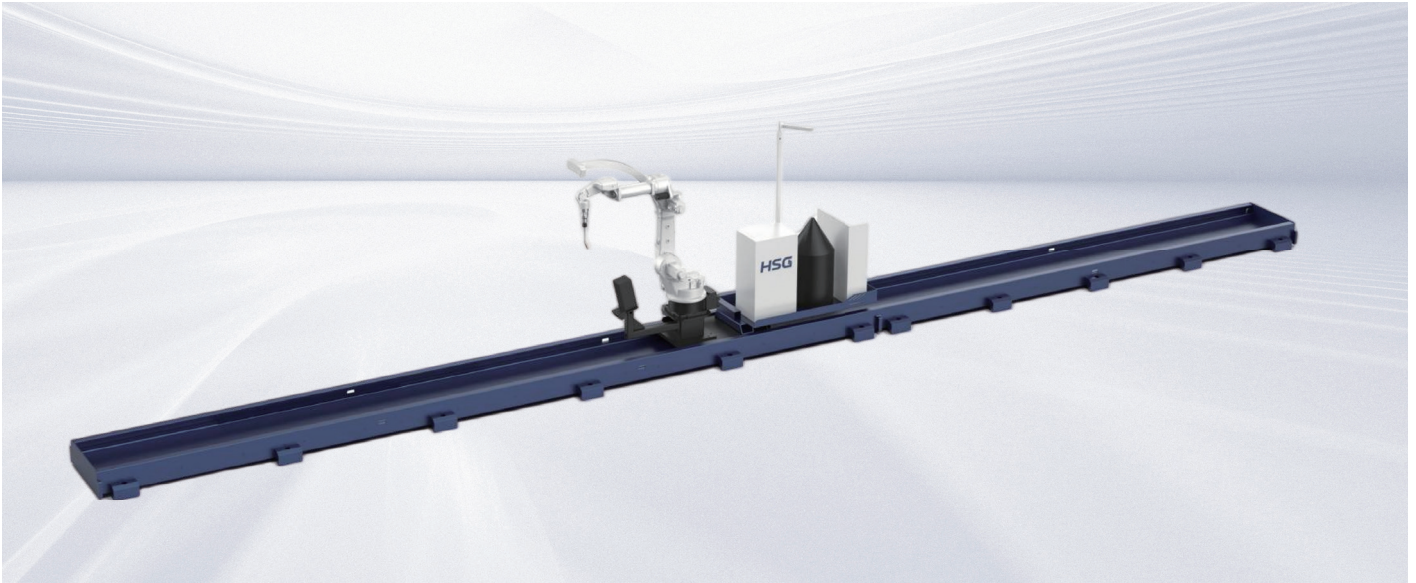


W3800-7-GR12

Teaching-free Intelligent Robot Welding Solution

APPLICABLE TO MULTIPLE FIELDS SUCH AS STEEL STRUCTURES, SHIPS AND OFFSHORE EQUIPMENT



PRODUCT OVERVIEW

High-Performance And Efficient Solutions of Welding



In the construction, shipbuilding, and road and bridge industries, there is a large demand for welding and processing of non-standard and small batch workpieces. Therefore, HSG provides new welding solutions for the industry to achieve high-precision welding operations, greatly improving processing efficiency and production safety.

TYPICAL PROCESSING

Support Welding of Various Steel Structure Products

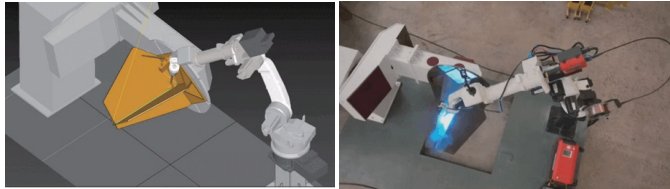
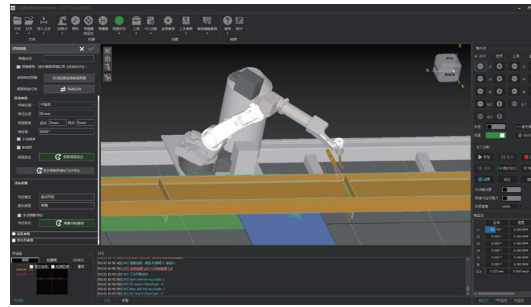


Support teaching-free welding for various steel structure products such as crane beams, clamping plates, corbel, bridge transverse partitions, ship assembly, floating decks, etc.

SAVE YOUR TIME

Reverse Modeling Technology

1. Zero Drawing Dependence: 3D workpiece contour acquisition via one-click scanning with an industrial camera
2. Automatic Modeling Generation: AI identifies workpiece features and outputs high-precision models for welding
3. What You See Is What You Get: Real-time visual adjustment, direct connection to robots for efficiency improvement



SAVE YOUR TIME

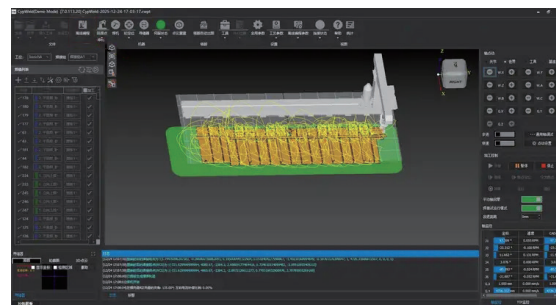
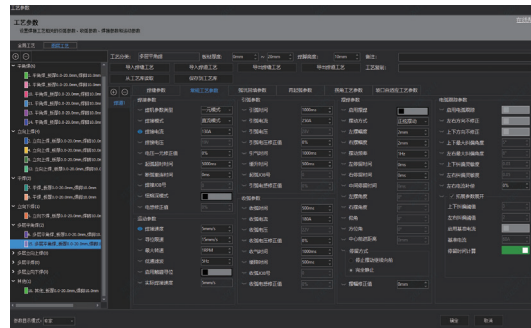
Digital Twin

1:1 real-time replication of the workstation status. Enabled by data-driven technology, it realizes real-time monitoring, simulation optimization and remote control, facilitating the visualization and intelligent upgrade of equipment operation and maintenance as well as production management.

IMPROVE WELDING QUALITY

Digital Process Library

The software comes with a comprehensive process library. It enables flexible selection of corresponding processes based on different plate thicknesses and welding positions, realizing the mechanical reproduction of the craftsmanship of senior welders.



SAVE YOUR COST

Offline Programming

Supports one-click import of 3D drawings, with algorithms intelligently planning welding paths. While the robot is performing online welding operations, the welding process for the next workpiece can be edited in parallel, significantly improving production efficiency.

TECHNICAL PARAMETERS

Model	W3800-7-GR12
Supporting System Software	HSG-FSWeld3800
Space Occupied per Unit	13000×3100×3340mm
Applicable Weld Types	Flat Fillet Weld, Vertical Fillet Weld, Multi-layer Multi-pass Weld, Groove Butt Weld
Applicable Component Specifications	10000*1200*550mm
Welding Material	Carbon Steel
Welding Thickness	6-20mm(≥16 mm: Bevel required)

*Information and images are for reference only. Final specifications and terms are subject to the contract and may change without notice.